



THE
REEDE
SCHOLARS

*10th Anniversary Celebration &
Annual Health Equity Symposium
May 09, 2019*

Joseph B. Martin Conference Center
77 Avenue Louis Pasteur, Boston, MA

Digital technologies have transformed how people globally communicate, socialize, learn, work, and increasingly intersect with the healthcare system. From Health Information Technologies (HIT), to wireless gateways and connectivity, biosensors and wearable personal technology, to precision medicine, mHealth, and Artificial Intelligence (AI), these are just a few of the ways 21st century technologies are making our lives better, moving health care toward a patient-centric model. Providers and stakeholders are using digital health to reduce inefficiencies, improve access, reduce cost, and increase quality. Patients and consumers can use digital health to better manage and track their health and wellness related activities.³

What lies ahead for health and health care in an era of such rapid healthcare disruption? Will medicine and patients of the future be much different from today due to the development of modern digital technology and mobile devices? Can we expect a transformation of medical practice from the population-based approach treating illness to individualized medicine while genome and digital technologies drive such transformation.^{6,7}

During our Annual Health Equity Symposium, panelists will share how innovative digital tools can improve health, health care, and a rapidly changing healthcare system. Additionally, we will elaborate ways in which providers, payers, and policymakers engage individuals, families, and communities to maximize opportunities to close disparity gaps and influence health equity with digital health technologies.



1:00 PM LUNCHEON –OPENING SESSION

Reede Scholars 10th Anniversary Celebration

Presenter: Mary Fleming, MD, MPH '11

President, Reede Scholars, Inc.

Reede Scholars Vision Awards Presentations

Presenter: Mary Fleming, MD, MPH '11

Keynote Address

Introduction of Speaker:

Mary Fleming, MD, MPH '11

“Digital health: Advancing health equity”

Jonathan Woodson, MD

2:20 PM – 5:00 PM SPEAKERS SESSION

10th Annual Health Equity Symposium

“Digital Health: Innovative technologies advancing health equity”

Moderator

Cynthia Hodge, DMD, MPH, MPA

Panelists

Jonathan Woodson, MD

Sally Ann Frank, BS, MS, MBA

Rhea Boyd, MD, MPH '17

Wilson Wang, MD, MPH, MPA '04

History and Mission

The Reede Scholars Health Equity Symposium was established to honor Joan Y. Reede, a mentor, inspirational leader, and tireless advocate for vulnerable populations. The Reede Scholars, Inc. is the alumni organization of the Mongan Commonwealth Fund Fellowship Program in Minority Health Policy, California Endowment Scholars in Health Policy, and Joseph L. Henry Oral Health Fellowship programs at Harvard Medical School.



MISSION

To engage and nurture a network of diverse, skilled and effective leaders who will collectively effect change through research, education, policy, and practice.

GOALS

Our growing network of scholars seeks to achieve the following goals.

- Ensure high quality health care and public health services for all populations.
- Enhance measurement and surveillance of targeted public health and health care goals in disadvantaged/vulnerable populations.
- Develop, implement, and evaluate health policies that address social determinants of health and leading causes of morbidity and death.
- Engage communities we serve through dialogue, education, and civic participation to advocate for improved health, community empowerment, and health equity.
- Support endeavors to educate future Reede Scholars.

***The Commonwealth Fund renamed the Fellowship as The Mongan Commonwealth Fund Fellowship in Minority Health Policy in honor of Dr. James J. Mongan, an innovative leader in health care delivery system transformation with a strong commitment to improving health care for vulnerable populations.

May 09, 2019

Greetings Scholars and Guests,

Thank you for taking the time to attend our 10th Annual Health Equity Symposium. This organization, formed in the name of Dr. Joan Reede, seeks to pay homage to her continuous work to make the world a better place for vulnerable and marginalized populations. The Reede Scholars work both individually in their communities to decrease health disparities and improve health equity; and collectively to share their work and the work of their colleagues with the broader community.



This year, as we celebrate together, we know that there is much work to be done. As we have made strides in areas such as access with the Affordable Care Act, decreased teenage pregnancy rates and gained diversity in national offices and institutions, we still face barriers in cancer outcomes, housing, transportation, fair wages and the list could go on...

The current leadership has worked hard to highlight the contributions of the Reede Scholars across the country through our quarterly newsletter, engage Scholars throughout the year with regular meetings, empower the membership during our Leadership Retreat and provide an avenue for inspiration and reflection during the Annual Meeting and Health Equity Symposium.

I hope you enjoy this year's meeting and continue to support us in the future.

Best in Health & Spirit,

Handwritten signature of Mary E Fleming, MD, MPH, FACOG.

Mary E Fleming, MD, MPH, FACOG
President, Reede Scholars, Inc

Congratulations Reede Scholars on your **10TH ANNIVERSARY AND 10TH ANNUAL HEALTH EQUITY SYMPOSIUM**

DentaQuest is on a mission to improve oral health for all. We work with partners, clients, patients and providers across the United States to make oral health care more affordable and easier to access with a focus on prevention. We call this all-in approach Preventistry. We are fundamentally changing the oral health system from the way we provide care and pay for it to how we talk about it and prioritize it in our policies and communities.

WELCOME TO PREVENTISTRY®



DentaQuest 

PRESIDENT

Dr. Mary E. Fleming is an ardent champion of health equity. As President of the Reede Scholars, (2014- present) she convened the first Reede Scholars Leadership Retreats in 2018 and 2019. The Retreats were convened to develop strategies for collective action among the Scholars to address health equity and social justice.

She completed her medical degree at Vanderbilt University School of Medicine and her residency in Obstetrics and Gynecology at Meharry Medical College. Due to her interests in eradicating health inequities and improving healthcare for the underserved, she matriculated to Harvard Medical School as a Commonwealth Fellow in Minority Health Policy where she also obtained a Masters in Public Health. She practiced in Norristown, PA for four years before deciding to transition to a full-time locum tenens physician. In this capacity, she has worked in several states across the country. This practice model also allowed her to travel to Kenya for six months to volunteer with Our Lady of Lourdes Mission Hospital in Mutomo.



An international traveler, Fleming currently serves as a clinical Ob/Gyn in shortage areas in the northeast region. She continues to explore avenues to grow her skill set to serve the vulnerable populations of this country and globally. Follow her blog @ nomadobgyn.com.

KEYNOTE SPEAKER

Jonathan Woodson, MD, leads Boston University's University-wide Institute for Health System Innovation and Policy. He is a Larz Anderson Professor in Management and Professor of the Practice at the Questrom School of Business, and holds joint appointments as Professor of Surgery at the School of Medicine and Professor of Health Law, Policy, and Management at the School of Public Health.

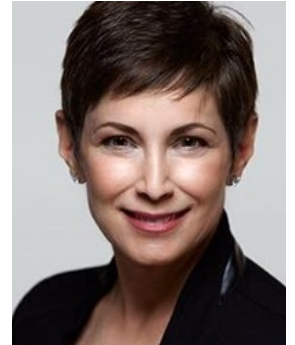
Dr. Woodson served from 2010 to 2016 as Assistant Secretary of Defense for Health Affairs in the United States Department of Defense (DoD). He was the principal advisor to the Secretary of Defense for all health and force health protection related issues, and ensured the effective execution of the DoD medical mission. He exercised authority, direction, and control over the Defense Health Agency, Uniformed Services University of the Health Sciences, Armed Forces Radiobiology Research Institute, Defense Center of Excellence for Psychological Health and Traumatic Brain Injury, and the Tricare Health Plan—responsible for servicing 9.5 million beneficiaries. His organization provided and maintained medical readiness for the medical services including during military operations, those held in control of the military services, and those entitled to Tricare.



PANELIST

Sally Ann Frank, Healthcare IoT Advisor | Global Black Belt Team | Americas.

As part of Microsoft's Global Black Belt team, Sally (@sallyafrank) helps healthcare companies use IoT to improve patient outcomes and efficiency. With more than 20 years in the technology industry, she helps providers, payers, medical device, pharmaceutical and life sciences companies use IoT, machine learning, predictive analytics and artificial intelligence to meet the changing demands of the healthcare industry.



Focused on business outcomes, Sally has been advising customers about IoT for more than 5 years, starting in the manufacturing sector before focusing on healthcare. She holds an MBA from The George Washington University (Washington, DC), an MS in Systems Management from the University of Southern California and a BS in Marketing and Computer Science from Virginia Tech.

PANELIST

Rhea W. Boyd, MD, MPH, FAAP is a pediatrician and child and community health advocate. She works clinically at the Palo Alto Medical Foundation and serves as the Chief Medical Officer of San Diego 211 and the Director of Equity and Justice for, The Children's Trust, a campaign to expand behavioral health access to every child in California. She travels to teach students and trainees about the relationship between structural inequity and health and is active in the American Academy of Pediatrics (AAP), serving on the board of her local chapter, California Chapter 1, and as a member of the AAP's national Executive Committee on Communications and Media.

In addition to her clinical, policy, and teaching work, Dr. Boyd enjoys participating in community-based advocacy. Over the past 5 years, she helped organize a group of public health officials, clinicians community advocates, and funders to evaluate and address the impact of harmful police practices and policies on child and public health. She also worked with a San Francisco-based tech non-profit to increase access to social services across the Bay Area as a means to improving child and community health. Dr. Boyd is the author of the blog Rhea.M (rheamd.wordpress.com), where she critically engages the intersections of health and justice. She is also active on twitter @RheaBoydMD.



After graduating from the University of Notre Dame, she earned a M.D. at Vanderbilt University SOM and completed her pediatric residency at UCSF, where she participated in the Pediatric Leadership for the Underserved Program. In 2017, Dr. Boyd graduated from the Commonwealth Fund Mongan Minority Health Policy Fellowship at Harvard University's School of Public Health with a M.P.H.

PANELIST

Dr. Wilson Wang is based out of New York City. He is the Founder & CEO of Walking Doctors, a cloud-based software company that helps doctors in low and middle-income settings make faster more accurate decisions. Wilson developed expertise in health sector behavior change and organizational management through clinical, policy, and programmatic interests.



For five years he lived abroad in Rwanda, Liberia and Indonesia building health systems thru non-profit and governmental partnerships. Wilson worked as Legislative Assistant for Health in the U.S. Senate, as Medical Director in Harlem's Public Health Office, and attends at NYU and New York City H&H Hospitals. He teaches at NYU's College of Global Public Health. Wilson trained as a pediatrician at Children's Hospital Oakland.

He earned an MPH from UC Berkeley and an MPA from Harvard's Kennedy School as part of a Commonwealth Fund - California Endowment Minority Health Scholars collaborative. He is a Robert Wood Johnson Culture of Health Leader.

SYMPOSIUM CHAIR

Cynthia Hodge is an academician, administrator, clinician, and mentor. Much of her life is devoted to mentoring and assisting young people achieve their dreams and raison d'être. Hodge has a Doctor of Medicine in Dentistry (DMD) degree from Oregon Health Sciences University, a MPH from University of North Carolina at Chapel Hill, and the MPA from Harvard. She is a 2003 Oral Health and Minority Health Policy Fellow.



In addition to many years in her private dental practice, her various professional positions include serving as the Assistant Dean, at the University of Connecticut School of Dental Medicine, Associate Dean at Meharry Medical College School of Dentistry, Senior Advisor of a FQHC, and Dental Director of a community Behavioral Health Center. She assisted in funding and launching, **Increasing Diversity in Dentistry (IDID)**, a preparatory program for under-represented pre-dental students.

She currently resides in Atlanta, GA. She has one son and two awesome grandchildren.

Favorite book: "Two Thousand Seasons" by Ayi Kwei Armah

Favorite quote: *"Of all the forms of inequality, injustice in health care is the most shocking and inhumane"*. -Dr. Martin Luther King, Jr. 1966

The Reede Scholars, Inc.
Annual Health Equity Symposium
 2010 – 2019

On May 6, 2010, The Reede Scholars convened its inaugural **Annual Health Equity Symposium**. The Reede Scholars, Inc., incorporated in 2010, are the graduate alumni of the Minority Health Policy Fellowship (MHPF) at Harvard Medical School.

The Minority Health Policy Fellowship is comprised of the **Commonwealth Fund Fellowship in Minority Health Policy at Harvard University**, **The California Endowment Scholars in Health Policy at Harvard University**, and the **Dr. Joseph L. Henry Oral Health Fellowship in Minority Health Policy** (formerly Oral Health Policy Fellowship) **Programs** at Harvard Medical School. In 2005 and 2006, Dr. Joan Reede, Professor of Medicine and Dean for Diversity and Community Partnership at Harvard Medical School (HMS), whose office houses the Fellowship programs, issued a challenge to the Fellows to create a sustainable activity or project. With that in mind, then current Fellow, Dr. Brian Swann first approached Dr. David Williams and discussed the idea. He then approached Ralph Fuccillo, of DentaQuest Institute, for monetary support. Michael Dukakis (1988 Presidential candidate) was invited to add power as a reviewer. The current fellows at the time supported the idea and collaborated as a team. Their efforts were rewarded with the inaugural 2010 Health Equity Symposium.

The 2010, theme was “*Integration of Care: An Approach to Achieving Health Equity*”. The generous funding provided by DentaQuest made this and other symposia possible. That year, Drs. Audra Robertson, Brian Swann, Monica Le and Judith Steinberg spearheaded the event. The occasion was well attended by Fellows and the broader Harvard and Boston communities. The symposium followed the current Fellows Practicum presentations and displayed the health equity work of alumni.

The speakers included Reede Scholars Cynthia Hodge, ‘02 and Lenny Lopez, ‘05, in addition to political leaders Michael Dukakis and Anne Beale. The organizers envisioned a platform for Scholars to discuss, present, and display their amazing work toward achieving health equity. Each year a panel of 4-6, speakers provide the most cutting-edge developments and innovations in the quest for equity for all. Scholars’ rich conversation with the presenters is always the highpoint. Many of the symposia have been audio-visual recorded and posted on our website. Highlights from all ten symposia can be found on our new [website](#).

It is noteworthy that in 2007, the west coast Scholars convened a successful symposium in California, on May 17th. The West Coast alumni of The California Endowment and Commonwealth Fund Fellows held the first alumni convened event, “*Sharing Strategies for Building Healthy Communities*”. This event, organized by Esiquio Casillas, Kim Rhoads, and Katherine Elliott took place in the breathtaking South of Market offices of Public Architecture, a San Francisco-based national non-profit architecture firm working for social justice. Brian Swann was one of the presenters. Their primary goals were: 1) to provide grant-writing assistance, and 2) to facilitate networking opportunities for non-profit organizations who work to improve the health and well-being of underserved and disadvantaged youth in Northern California.

The Health Equity symposium is held each year, in conjunction with the LEADERSHIP AND FACULTY DEVELOPMENT PROGRAM CONFERENCE AND MINORITY HEALTH POLICY ANNUAL MEETING. Themes consistently focus on understanding health disparities, proven and innovative approaches to achieving health equity, and policy implications. The ten themes to date are:

- 2010 “Integration of Care: An Approach to Achieving Health Equity”
- 2011 “eEquity: Leveraging Technology to Achieve Health Equity”
- 2012 “From the Lecture Hall to the Town Hall: Messaging Strategies to Advance Health Equity”
- 2013 “Mental Health Integration: From Policy to Practice”
- 2014 “The Affordable Care Act: Who’s In & Who’s Out”
- 2015 “Crossing the Line: An Interdisciplinary Conversation on Immigrant Children”
- 2016 “Capitalism and Health Equity: Friend or Foe?”
- 2017 “Integrated Care: Oral Health’s Role in Equity”
- 2018 “Oral Health & Equity: Integration in Action”
- 2019 “Digital Health & Equity”

In 2017, we approved a resolution to include a vision award, as an integral component of the symposium. The Vision Award is given to a recipient, individual, organization, or institution, in ‘...*grateful appreciation for unwavering commitment to and support of the Reede Scholars Annual Health Equity Symposium*’. While we have enjoyed widespread support throughout our ten year life, to-date, two recipients have received the Vision Award: in 2017, Mr. Ralph Fuccillo of DentaQuest, and in 2018, Dr. Joan Reede of Harvard Medical School. The first Reede Scholar to receive the Vision Award is Dr. Brian Swann, Harvard School of Dental Medicine, in 2019, for his significant efforts to assure success of the symposium.

Symposium Chairs have included: Kim Rhoads, Brian Swann, Audra Robertson, Sanjeev Sriram, Mary Fleming, and Cynthia Hodge (2017 – present). The 2019, theme is “**Digital health and equity**”. A provocative group of speakers, who will highlight eHealth and the myriad opportunities to eliminate health disparities through electronic technology, have been assembled. Presentations will also address how to avoid or minimize unintentional consequences associated with eHealth. Two Reede Scholars are among the speakers: Drs. Rhea Boyd and Wilson Wang.

Again, this year DentaQuest is our platinum sponsor! We are genuinely appreciative and grateful for their initial and continued support. We also acknowledge and thank all who have contributed to the symposium: Colgate Palmolive, Henry Schein, Oral Health Institute and Brushtime Bunny, along with those individual Reede Scholars who have financially supported and continue to support the symposium.

Since its inception, the staff in the Office of Diversity and Community Partnerships at Harvard, under the stewardship of Dean Joan Reede, has been an exceptional partner and supporter of our annual symposium. Each year the staff willingly assist in anyway needed to bring the Symposium to fruition. Without their assistance this important event would be much more challenging. We are forever indebted to them.

The Reede Scholars are a culturally, socially, politically, and professionally diverse group of physicians, dentists, and mental health professionals who are passionate advocates for health equity. The Reede Scholars alumni group holds the explicit mission of decreasing disparities and improving the physical and mental health of underserved communities. The inaugural event served as a springboard for ongoing efforts in this area. Included in these efforts will be a yearly alumni event with the goal of strengthening community-based efforts to create positive change for underserved groups.

Five Reede Scholars have served as President:

Dr. Muntu Davis 2008 – 2010

Dr. Audra Robertson 2010 - 2012

Dr. Mallory Williams 2012 - 2014

Dr. Mary Fleming, 2014 - present

The early leaders worked diligently to execute our first website, incorporate the organization, and apply for non-profit status. Because of their efforts, we are a strong ardent alumni organization that embodies the heart, soul, and spirit of a family. We have an appreciation for the social, environmental, economic, and political determinants of health and health care, and seek ways to mitigate these barriers. Our overarching goal and commitment is to health equity and better health for all. Our widely diverse alumni reflect expertise in every aspect of healthcare.

We welcome the next ten years and look forward to continued success in the future. From the heart, we thank *all* who have attended, supported, worked, and given, each year to assure our success. We are forever and always grateful!



Reede Scholars in Action



DEAR SCHOLARS,

Congratulations for 10 years of successful Health Equity Symposiums. The fellowship is the highlight of my training career and Reede Scholars is the cornerstone of my alumni involvement. The lifelong friendships and invaluable mentorship continues. I'm looking forward to many more years of meaningful and robust achievements!



Onward and Upward!

Mary, REEDE SCHOLAR Class of 2011

THANK YOU!

DentaQuest



HARVARD
MEDICAL SCHOOL



OFFICE FOR DIVERSITY INCLUSION & COMMUNITY PARTNERSHIP

Brushtime
Enterprises Inc.



The Children's Oral
Health Institute

Reede Scholars Officers 2018-2020

President—Mary E. Fleming, MD, MPH

Secretary—Nicole del Castillo, MD, MPH

Treasurer—Kavitha Prakash, MD, MPH

The Reede Scholars, Inc. Health Equity Symposium Planning Committee:

Chair: Cynthia E. Hodge, DMD, MPH, MPA

Mary Fleming, MD, MPH, Nicole del Castillo, MD, MPH, Phillip Woods, DDS, MPH, Alexy Aruaz Boudreau, MD, MPH, D'Nyce Williams, MD, MPA, MPH, Samantha Rosman, MD, MPH, Kavitha Prakash, MD, MPH

Acknowledgement: Photographer Jeff Thiebauth